

Be careful what you believe in

13.09 - 21.09 - Poland, Kurnędz Pilica

Information about the project

"Be careful what you believe in" (2020-1-PL01-KA105-079395) - the project is aimed at recognizing false information, fakes in social media, and also teaches young people to be more advanced and conscious in the social media space. Each participant will improve their competencies in organizing local events and interacting with the local community.

Applied methods of work - non-formal education methods, discussions, group work, simulation games, simulations, team building, getting to know each other games, peer education, interactive games, tasks to simulate creativity, reflections, reflections group

Participants

Participants' country: **Bulgaria, Slovakia, Poland and Macedonia**

- are able to participate in the whole duration of the Youth Exchange
- leaders 1 per country
- participants 6 per country (18 - 25 years old)

Venue

You will be accommodated in summer houses in Kurnędz Pilica in Poland.

We invite you to stay in **3-6 bed houses**. Each one consists of few rooms and a toilet room. You will live with another **3-5 participants** from different countries of the same gender (as according to the Erasmus+ rules)

WiFi will be available at the venue from organisers. However, we can't guarantee its quality, and we recommend not planning any online meetings or work to do during your stay.

Please bring your own personal hygiene kit, shampoo, hairdryer (if needed) and towels.

The workshops will take place in the building just 10 steps away from the houses where you will live. It's the same complex of buildings.

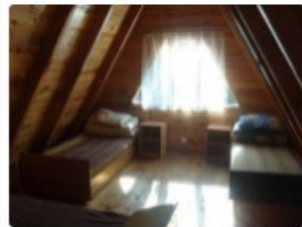
The address of the venue:

Kurnędz Pilica

Kurnędz 55B, 97-330 Kurnędz, Poland

<http://www.pilica.ymca.pl/>

Please find Pilica's photos below.



Arrivals and departures

The Youth Exchange will consist of 7 days of the program (14th of September - 20th of September) + 2 travel days (13th of September - arrival day - 21st of September - departure day).

All the participants are expected to attend the entire program.

NOTE: We kindly ask you to plan your travel in a way to reach Warsaw 23rd of September by 3 p.m. so you will be able to catch the public train to Łódź (Lodz) (the first train from Warsaw to Łódź at 2:37 p.m. and the last will start from Warsaw at 8:49 p.m. from Warsaw to Łódź).

The cost of this train is the same every time 28,80 zł (around 7 EUR) in one way and take around 1:30 hour to take to Łódź.

After you get to Łódź you will take a bus from Łódź to Kurnędz Pilica (remember to give the driver the full name of this small village). The schedule of the bus, price and place exactly where you will start to go we will update you in a new version of infopack and in a Facebook group soon.

Don't worry about your tickets and flight and consult with travel individually with Andrew.

(mediabecareful.adra@gmail.com).

It's needed to consult with each group about tickets and flights before you will buy them!

Travel cost and reimbursement

Our project is funded by Erasmus+ Programme. Organisers will provide accommodation and food. Travel costs will be covered according to the funding rules of Erasmus+ Programme based on the Erasmus+ distance calculator as follows (cost per participant, return ticket, in EUR).

Hosting organisation DOES NOT require a kind of participation fee.

Bulgaria 275 EUR

Slovakia 275 EUR
Macedonia 275 EUR

You will need to provide all these documents to organisers, if possible, during the training, in order to avail of any travel reimbursement.

This project is not allowed to reimburse PCR tests or antigenic tests.

NOTE: Before buying flight tickets to Poland please send to Andrew some information about the flight. We will check your tickets before you buy them to make sure you'll be there on time.

Information about current travel restrictions you can find here:

<https://reopen.europa.eu/pl/>

One more link:

<https://strazgraniczna.pl/pl/aktualnosci/informacje-dla-podroznzy/9081,Kwarantanna-po-przekroczeniu-granicy.html>

Money

The currency in Poland is Polish złoty (PLN)

1 euro = 4,40 PLN

bottle of water: 1 - 3 PLN (0,5l)

a juice in a cafe: 5 - 10 PLN

sandwich: 5 - 10 PLN

Espresso in a cafe: 6 - 9 PLN

Climate and weather

In September, the average temperature is around 21°C and 10°C at night; note that we will contact you about clothes later on the Facebook group (I will create our joint group on Facebook to get us all acquainted before the mobility).

It should be sunny during the Youth Exchange.

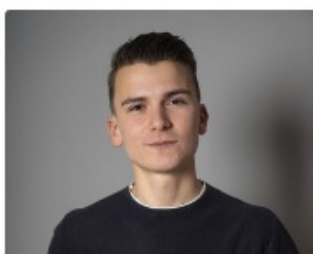
Insurance

Please take your European Health Insurance Card (EHIC) with you.

Please make sure you have valid travel insurance for the entire staying in Poland. We also recommend to add options connected with COVID epidemic (cancelled flight, infection, quarantine etc.).

Other

- Please take some food from your country an intercultural evening;)



Contact to Andrew, coordinator of the project

 Facebook

 mediabecareful.adra@gmail.co...

 (+48) 576 929 055

