



INFOPACK

AI in Education for Youth Workers

TRAINING COURSE



Co-funded by
the European Union

NEW EUROPE
FOUNDATION



OVERVIEW

This 12-day training course is designed to empower youth workers by introducing them to the key elements of Artificial Intelligence (AI) and its integration into educational settings. AI is rapidly transforming education by offering personalized learning experiences, automating administrative tasks, and creating more inclusive learning environments. The course emphasizes the potential of AI to align with the EU Youth Goals, promote democratic participation, foster green practices, and utilize digital technologies to enhance educational outcomes.

OBJECTIVES

Equip youth workers with a foundational understanding of AI and its applications in education.

Explore the role of AI in promoting inclusivity, equity, and ethical considerations within educational projects.

Develop competencies in integrating digital technologies and AI tools into youth engagement and educational projects.

SCHEDULE

ARRIVAL DAY: 20-09-2024

DATES OF THE YOUTH EXCHANGE:

21.09.2024 -01.10.2024

DEPARTURE DAY: 02-10-2024

TRAVEL BUDGET

(distances in the straight line)

Distance	Travel using ecological means of transport	Travel without using eco-friendly means of transport
10–99 km	56 EUR	28 EUR
100–499 km	285 EUR	211 EUR
500–1999 km	417 EUR	309 EUR
2 000–2 999 km	535 EUR	395 EUR
3000–3999 km	785 EUR	580 EUR
4000–7999 km	1 188 EUR	1 188 EUR
8000 km or more:	1 735 EUR	1 735 EUR



WHAT TO BRING?

- **Passport or ID card**
- All travel **TICKETS!**
- Towels and personal hygienic things (shampoo, soap, toothbrush etc.)
- Hair dryer - the venue does not provide such
- Your positive attitude and willingness to participate in activities

OTHER PRACTICALITIES

This project is fully funded by Erasmus+.

- During the training course we will organize a cultural evening. Bring with your traditional snacks and drinks, some games for the evening. Bring necessary ingredients with you, the venue cannot provide it.
- In the centre there is Wi-Fi Internet connection so you can bring your computer.
- During the project you will be provided with 3 meals (breakfast, lunch, and dinner), also 2 coffee breaks a day.

TRAVEL EXPENSES

1. Travel expenses will only be reimbursed upon presentation of documents proving the amount actually paid: original invoice. Documents must include the date, price, traveler's name, destinations, and the receipt must be completely clear.
2. Keep all travel documents that you will receive during your trip: boarding passes, receipts, tickets, etc. as we absolutely need them!
3. Taxi rides are **not refundable**.
4. **Travel expenses can be reimbursement during the exchange or after.**

HOW TO GET HERE?



Ósrodek Społeczny, ul. Żywiecka 67, Międzybrodzie Bialskie,
Silesian Voivodeship, Poland, 34-312

IF YOU ARE LANDING IN KATOWICE

Katowice Airport → AP bus → **Katowice Dworzec** (railway station)

Katowice Dworzec → train → **Bielsko-Biała Główna** (railway station)

Bielsko-Biała D.a bus station → 113 or 114 bus →

Międzybrodzie Skrzyżowanie (20 stops)

Międzybrodzie Skrzyżowanie - few minutes on foot → **YOU ARE THERE!**



IF YOU ARE LANDING IN KRAKOW

Kraków Airport (Kraków Lotnisko) → SKA1 train (6 stops, every half an hour, after 6 pm every hour) → **Kraków Główny** (Main railway station) **Kraków Główny** → train → **Bielsko Biała Główna** (railway station) (Direct trains: 06:06, 10:41, 13:50, 14:41, 16:35, 18:43)

Bielsko-Biała D.a bus station → 113 bus (6:05, 6:35, 8:40, 9:45, 10:30, 14:00, 14:40, 15:40, 16:40, 18:20, 19:20, 21:20, 22:30) →

Międzybrodzie Skrzyżowanie (20 stops)

Międzybrodzie Skrzyżowanie - few minutes on foot → **YOU ARE THERE!**

OR LONGER OPTION

Kraków Airport (Kraków Lotnisko) → SKA1 train (6 stops, every half an hour, after 6 pm every hour) → **Kraków Główny** (Main railway station)

Kraków Główny → train → **Katowice Dworzec** (railway station)

Katowice Dworzec → train → **Bielsko Biała Główna**

Bielsko-Biała D.a bus station → 113 bus → **Międzybrodzie Skrzyżowanie (20 stops)**

Międzybrodzie Skrzyżowanie → few minutes on foot → **YOU ARE THERE!**

USEFUL LINKS

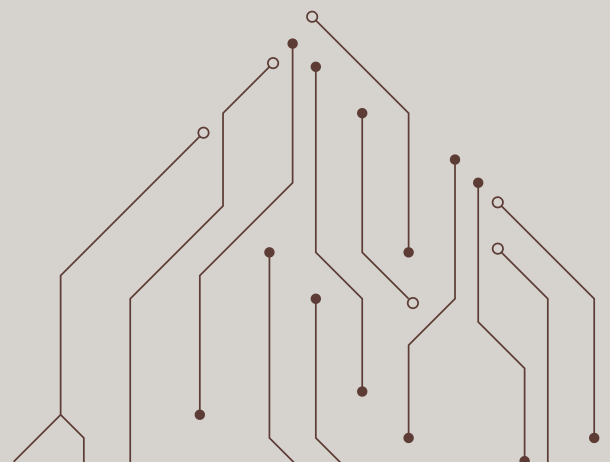
[INTERCITY](#)

[KOLEJE ŚLĄSKIE](#)

[ECOLINES](#)

[FLIXBUS](#)

[LUXEXPRESS](#)



ACCOMMODATION



The accommodation provided is at the **Spółecznik Center** located in the picturesque **Żywiec County**, in the midst of the **Silesian Beskid Mountains** and in the vicinity of the **Żywiec Lake**.

All costs related to accommodation and meals are covered by the organizer. Reimbursement of travel expenses will be made by bank transfer, using the prevailing exchange rate and issued in euros (€). In addition, no fees will be charged for participation in the conference.

HOW TO APPLY?

Fill out the form available on our website, and we will get in touch with you shortly: neweurope.pl



CONTACT

If you have any questions, don't hesitate to ask!

erasmus@neweurope.pl
+ 48 602 223 540

Adrian Misiak
adrian.misiak@neweurope.pl
+48 537 198 715



Co-funded by
the European Union

NEW EUROPE
FOUNDATION



Funded by the European Union. Views and opinions expressed are however those of the author(s) only and do not necessarily reflect those of the European Union or the European Education and Culture Executive Agency (EACEA). Neither the European Union nor EACEA can be held responsible for them.